



SXR AUDIO STAND

Discover Your System's Capability

Introduction

Thank you for purchasing the Harmonic Resolution Systems SXR Audio Stand. When used properly, it will give you many years of superior musical or video signal reproduction.

The SXR Audio Stand significantly reduces the negative impact of structure-borne noise on your audio or video component performance. Decades of engineering experience, custom material development, and listening tests are incorporated into the design of the SXR Audio Stand. This high performance product from Harmonic Resolution Systems, Inc. will enable your audio/video source and amplification components to achieve high levels of performance.

The SXR Audio Stand, which includes the HRS Isolation Base as the primary shelf system, is a perfect match for the HRS Damping Plates and Nimbus Products. While the SXR Audio Stand and Isolation Bases work to significantly reduce structure-borne noise, the HRS Damping Plates and Nimbus Products significantly reduce the harmful effects of air-borne noise and structural resonance on your components.

*Please read this manual **completely** prior to assembly and use of your SXR Audio Stand. It contains instructions necessary for proper assembly, use, and care of this system. Proper care of your SXR Audio Stand will ensure optimum performance and an aesthetically appealing system.*

Safety Instructions

IMPORTANT WARNINGS!

*Do not place any tall objects on the top shelf of the SXR Audio Stand. A tall object is any object with a height that is greater than the length of the isolation base. A tall object is also any object that has a height greater than its own width or length. Tall objects **must not** be placed on top of the SXR Audio Stand for any reason. The object may become unstable and tip over causing damage to the component, adjacent objects, or injury to people.*

Never lift or move the SXR Audio Stand with the shelves (Isolation Bases) installed. You should always move the SXR Audio Stand frame to its final location prior to loading shelves and components. Moving the SXR Audio Stand frame with the isolation bases installed (with or without equipment) can permanently damage the frame system or cause the shelves to fall out of the rack resulting in potential damage or injury. Always take the time to remove all of the equipment and shelves to relocate the SXR Audio Stand.

*Do not lift the Isolation Base (shelf) by the inner plate (M3 model) or the external feet attached to the bottom of the rectangular frame. **Always** lift or move the isolation base with the inner plate facing up and the external support feet facing down (same orientation as when used to support your component). **Always** follow these handling instructions to prevent personal injury or damage to the unit.*

Set-Up Instructions

The SXR Audio Stand consists of a frame structure and the isolation bases that support each component. The components required to assemble the frame are shipped in one or more boxes. The number of boxes depends on the system size. Each box containing parts for the frame will be marked with the model number starting with SXR. All the wrenches required to put the frame together are included with the shipment. The only tools not provided that will be useful for assembly is a level. We recommend a standard 12" level bubble level or equivalent.

Work Surface - *Prior to unpacking any material, locate a very strong and very stable work surface (capable of supporting 250 lb. load) or area on the floor that will give you a very soft scratch resistant work area that is at three feet by three feet in size. The more space you have the better, as it will give you room to move around the frame to complete assembly. It is important that the area be free of all dirt, screws or small pebbles, and that it is covered with a clean soft protective blanket of same size that will prevent damage to high quality finish on the frame.*

Unpacking Assembly Hardware - *Remove all the contents from all the boxes marked with SXR model number. Place all the hardware on a table adjacent to your selected work surface and remove all the wrapping material. Be careful not to drop or allow the anodized aluminum parts to contact each other as they may scratch the surface. Do not stack the parts on top of each other once they are removed from the protective packaging material. To make assembly easier group identical parts together in an organized manner. Make sure all tubes are matched for proper (same) length.*

This audio stand will be assembled upside down. Depending on what frame configuration you have purchased there will be a number of Support Braces that have threaded studs already attached. Do not try to remove these threaded studs as they are attached to the frame. These Support Braces with threads will be the top of the audio stand.

Note:

Depending on how your SXR audio stand frame was shipped it may arrive partially assembled. This means Steps 1 and 2 would have been completed so the Support Braces and Cross Braces will already be attached. If your SXR was partially assembled, complete assembly by skipping Steps 1 and 2 and referring to the instructions at Step 3.

Step 1. Obtain one of the Support Braces with threaded studs. Place it upside down on the work surface with threads facing up (see photo 1). Obtain a Cross Brace and flip this over as well as shown in the photo below. Slide one of the ends of the Cross Brace into the area below the countersunk holes on the Support Brace. The countersunk holes of the Support Brace should line up with the threaded holes of the Cross Brace.

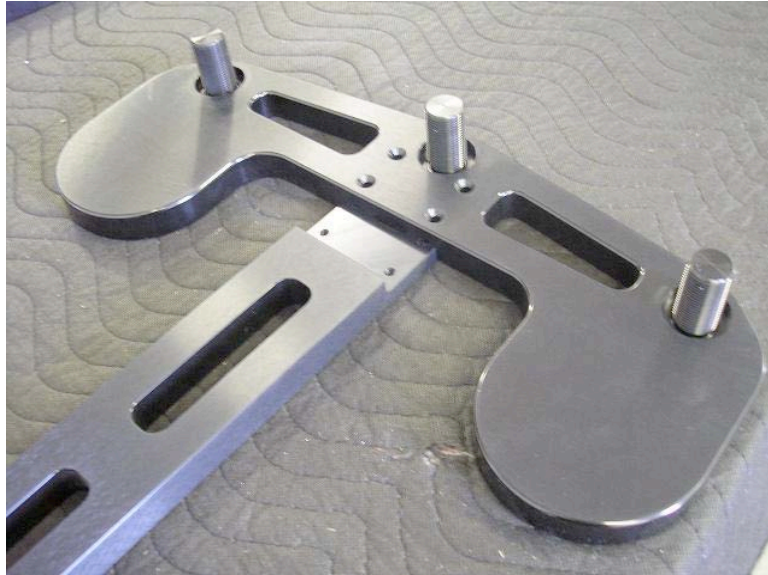


Photo 1

Step 2. Using the 5/32" Allen wrench (supplied with stand) attach the Cross Brace to the Support Brace with the 1/4" - 20 x 3/4" flat head cap screws (also supplied with the unit). Before tightening screw fully be sure that the Cross Brace and Support Brace are completely perpendicular to each other as shown in Photo 2. Tighten screws (shown in Photo 3) until the screws stop turning and the top of wrench handle twists an additional 1/16 and 1/8 of a rotation relative to the bolt. This will give you proper torque on the assembly. Repeat steps 1 and 2 for the opposite side of the Cross Brace with again checking that the two parts are perpendicular to each other (minor adjustments can be made prior to torque of the bolts).

Note: If assembling a double or triple wide SXR the Center Brace will be installed to the other side of the Cross Brace.

*Note: Be **very careful** not to cross-thread the threaded struts or fasteners. They should thread in very easily. If it does not, back it out and start it in again (repeat as necessary). Never force a threaded connection. If it does not thread on easily then there is something wrong and you should contact HRS or your local retail facility for assistance. Apply proper torque when instructed and after all the fasteners at each step are in place.*

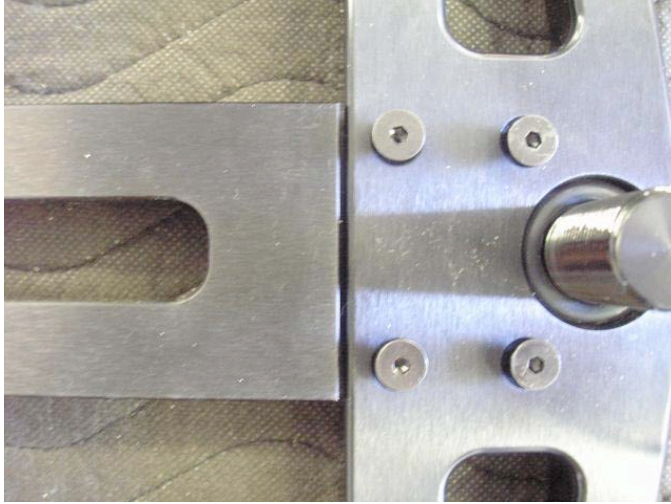


Photo 2

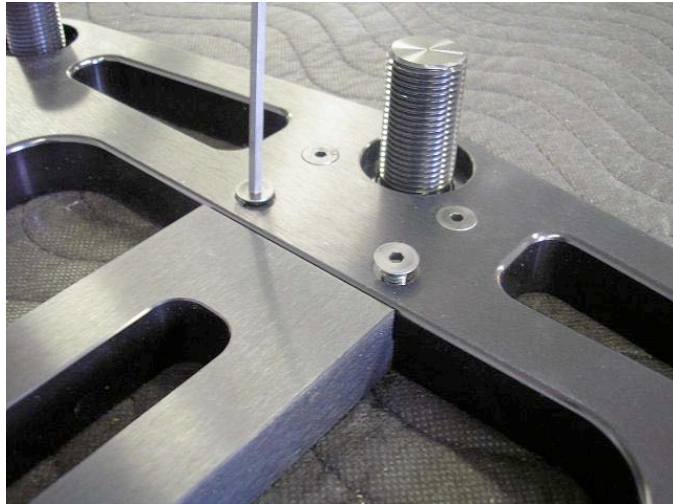


Photo 3

Step 3. Slide a polymer ring over each of the threaded studs on the Support Brace as shown in Photo 4. Push down until the polymer ring is seated in the groove on the Support Brace.



Photo 4

Step 4. Apply 4-5 drops of the 3-in-1 oil to the top few threads of each of the six threaded studs as shown in Photo 5.

If assembling a SXR-1V (one high stand or amp stand) go to Step 10. If not continue with next step.



Photo 5

Step 5. By hand screw the struts onto the threaded studs as shown in Photo 6. If you have a stand with different size struts keep in mind that you are building the stand upside down. The struts you are installing now are the struts that will become the struts between the top and second shelf when the stand is completed.

Note: Shelf spacing is approximately 3” less than the strut length. Verify you have the correct strut length required for your system. HRS offers a variety of strut lengths so consult your dealer if you are not certain you have the correct parts for your desired spacing.



Photo 6

Step 6. *Screwing the struts (of same length) onto the threaded studs will begin to get more difficult when they come in contact with the polymer rings. To tighten the struts more firmly use the MagiGrip tool supplied with the unit. To do this tighten the rubber strip firmly around the strut and turn handle. The teeth on the MagiGrip should be pointed in the direction of rotation. The strut has proper torque when it is 1 full turn (360 deg) after the strut is finger (snug) tight. For example Photo 7 below shows a strut being tightened by rotating the MagiGrip clockwise.*

Note: it is important to get proper torque on struts to achieve proper frame stiffness and performance.



Photo 7

Step 7. *Slide a polymer ring over the threads of each of the struts. Be sure the polymer ring is seated fully on the strut as shown in Photo 8 (the polymer ring should sit on the non-threaded shoulder just below where the thread stops).*



Photo 8

Note:

If your SXR came partially assembled please make sure that in Step 8 the 1/4" - 20 x 3/4" flat head cap screws must be loosened 1/4 turn before proceeding to Step 9.

Step 8. *Refer to steps 1 and 2 to build another Support/Cross Brace subassembly as shown in Photo 9. However this time each screw should be finger tight and then loosen by turning the Allen wrench 1/4 turn counterclockwise.*

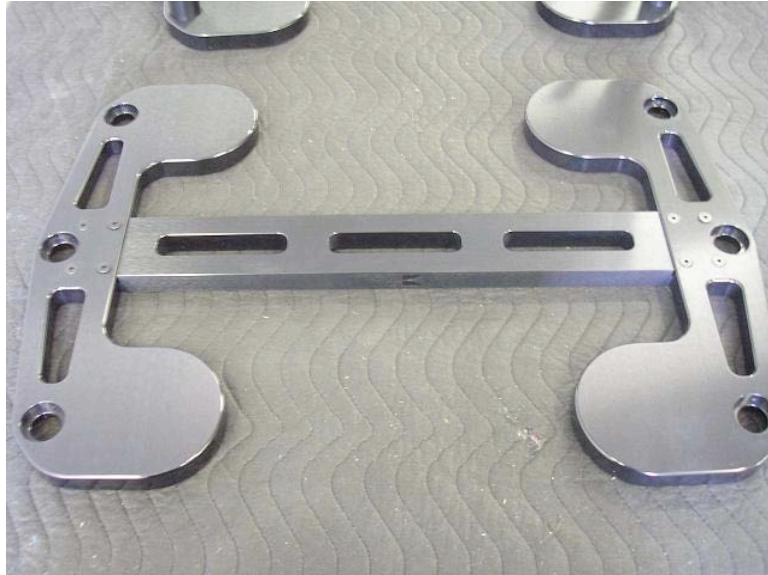


Photo 9

Step 9. *Carefully place the Support/Cross Brace subassembly onto the struts of the SXR by placing each strut through the holes of the Support Braces as shown in Photo 10. Make sure the HRS logo of the Support/Cross Brace subassembly is located on the same side as first Cross Brace. Make sure that each strut is properly seated into each countersunk hole of the Support Brace.*



At this point the screw ^{Photo 10} in the Cross Brace sub assembly should be fully tightened. Before tightening screw fully be sure that the Cross Brace and Support Brace are completely perpendicular to each other as shown in Photo 2. Tighten screws (shown in Photo 3) until the screws stop turning and the top of wrench handle twists an additional 1/16 and 1/8 of a rotation relative to the bolt. This will give you proper torque on the assembly. Repeat steps 1 and 2 for the opposite side of the Cross Brace with again checking that the two parts are perpendicular to each other (minor adjustments can be made prior to torque of the bolts). After the 8 bolts are tightened check one more time to make sure the Struts are still sitting into the counter bores on the backside of the Support Brace.

As done in Step 3 add a polymer ring to each of the threaded ends of the struts (see Photo 11) Make sure the Polymer Ring sits into the counter bore of the Support Brace.



Photo 11

As done in Step 4 - add 3-4 drop of oil to each of the threads of the struts.

If your SXR requires another layer to be added repeat Steps 5 to 9. Note when building the additional layers you should torque the struts in a sequence going to one half turn (past snug) on each strut and then through the sequence again to obtain the full rotation (past snug).

Step 10. *After placing the Polymer Ring over each of the threaded struts. Screw a Locking Nut onto each of the struts making sure that the end of the Locking Nut having the smaller diameter is placed on first as shown In Photo 12.*



Photo 12

Step 11. *When the Locking Nut meets the polymer ring and begins to become hard to tighten refer to Step 6 to use the MagiGrip to tighten the Locking Nut as shown in Photo 13. As with the struts the Locking Nut will require about 1 full turn after the Locking Nut in hand tight to achieve desired torque.*

Note: it is important to get proper torque on Locking Nuts to achieve proper frame stiffness and performance.



Step 12. *Screw the Locking Nut onto the threads of the struts completely as shown in Photo 13. Screw it all the way down until the Washer comes in contact with the Locking Nut. Light hand tight is fine. Do not put a large torque on Washer.*



Photo 14

Step 13. *Screw the Stand Points onto the threads of the struts completely as shown in Photo 15. Again, just thread on completely until Stand Point is in contact with Washer but do not over torque.*



Step 14. At this ^{Photo 15} XR Frame is completely assembled. Flip the SXR Frame upright as shown in Photo 16. Move the frame to the exact final location for use in your system. Make sure the front of the frame is the side with the HRS logo on the Cross Brace facing into the room. You are now ready to level the SXR frame. Place a level on the top Cross Brace. Rotate the Stand Point counter clock wise (clock wise if viewed from the top of the stand) as required to level the stand and make it stable (contact with floor at all four locations). Make sure you do not rotate the Stand Points out more than 4-5 complete rotations. The Stand Points must have 3 complete rotations of engagement remaining with the threaded strut for proper performance and strength. If more adjustment is required use a shim under the Stand Points so that the additional travel is achieved without violating the 3 full thread minimum engagement requirement. When the stand frame is level, hold the Stand Points with one hand and screw the Washer with your other hand back into the top of the Stand Point and torque as much as possible with your hands. You can use the Magic Grip if you need to get additional torque. This will lock the Stand Points into place and take any motion out of threaded connection. The result should be a very stable, firm, and level frame structure.



Photo 16

Isolation Base Installation into SXR Frame - Uncrate each of the isolation bases if not already complete. Make sure you read and follow all of the instructions in the isolation base manual prior to installing into the SXR Audio Stand frame. You will want to verify that the frame size matches the isolation base size. The SXR-1921 uses the 1921 isolation bases. The SXR-1719 uses the 1719 isolation bases.

Match the load range of each isolation base with the component weight. Matching the isolation base to the proper component weight will insure optimum performance. The load range can be changed for a nominal factory fee so if you do not have the correct load range for a component, please contact Harmonic Resolution Systems or your local certified retail location to arrange to have this corrected.

Load the Isolation Bases into the SXR Frame (see Photo 17 and 18), with the HRS logo facing the front of the rack system. Be sure that the isolation base (shelf) foot is located securely in the pocket of the SXR Frame Support Brace. This will automatically occur when the front and back edge of the isolation base is in line with the front and back face of the frame. If the front and back edges do not line up with the front and back of the frame structure then, contact Harmonic Resolution Systems or your certified retail location because you do not have the proper size isolation base or frame.



Photo 17



Photo 18

Completed SXR Singlewide3V version on left, and Doublewide 3V version on the right. Both system shown with M3 Isolation Bases.

Loading Components into SXR Frame - Carefully load each component into the SXR Audio Stand. Be careful not to hit the front edge of the isolation base because you will scratch the frame. Once all the components are loaded, you should check to see that none of the isolation bases are overloaded. By placing one or two fingers on the bottom of the Support Brace and your thumb on the top of the isolation base, you should be able to move the top of the isolation base slightly (at all four corners) when you squeeze your finger(s) together. If there is no compliance, remove the isolation base and component to verify the load range of the isolation base is correctly matched with the component. The load range of the isolation base is identified as part of the part number on the tag attached to the bottom (see the isolation base manual for instructions). Please consult with your authorized Harmonic Resolution Systems dealer or contact Harmonic Resolution Systems if you need assistance. The isolation base load range can be easily modified at any time by sending it to Harmonic Resolution Systems or an authorized dealer to have the primary isolation stage rebuilt.

Care and Maintenance

The SXR Audio Stand is a very low maintenance item that will provide many years of trouble-free performance by applying these basic care instructions.

Clean the external surfaces of the SXR Audio Stand frame using a professional quality ultra soft lint-free micro-fiber cloth available in high quality automotive stores. Use a lightly water damped cloth if you need to clean dirt from the frame. Do not use commercial furniture polishes on the SXR.

Please follow the care instructions in the isolation base manual to clean and care for the shelves (isolation bases) of the SXR Audio Stand. Read and follow the instructions received with the isolation base to ensure optimum performance and cosmetic appeal.

Do not spray, soak, or submerge the rack frame or isolation bases in water or cleaning solutions. The rack system and isolation bases are made from many different parts and materials. Submerging, spraying, or soaking the rack system or isolation base will cause permanent damage to the assembly.

Clean the metallic parts of the isolation base and SXR Audio Stand using a lint-free soft (non-abrasive) cloth. Use a damp cloth with a mild soap or Pledge Surface Cleaner if required. Do not use abrasive cleaners or solvents to clean the SXR frame or isolation base, as they will damage the quality of finish. Solvents and solvent-based cleaners will attack and damage some of the materials used in the SXR frame and isolation base and should never be used.

Do not wash the interior flex element of the isolation base feet even if you see a coating or white substance on the surface of the flex element. This coating is intentional and is put in the flex element to protect the isolation material from the environment

Warnings!

Placing ultra sharp pointed feet directly on the isolation bass may cause permanent scratches.

Do not immerse in water or spray with water or any other liquids.

Do not use abrasive cleaners or abrasive sponges.

Do not wash with any solvent based cleaning solutions.

Do not wash the interior flex element of the isolation feet even if you see a coating or white substance on the surface of the flex element.

Be very careful not to cross thread the fasteners when moving the shelf brackets

Warranty

Limited Five Year Warranty

Harmonic Resolution Systems warrants to the purchaser that each HRS SXR Audio Stand is free of manufacturing defects for a period of five (5) years from the date of purchase. This warranty is subject to the following conditions and limitations.

- 1. A copy of the original purchase receipt from a certified Harmonic Resolution Systems authorized retailer is used to verify the date of original purchase and ownership.*
- 2. This warranty is void and inapplicable if the product has been handled other than in accordance with the instruction specified within this document, abuse or misused, damaged by accident or neglect or in being transported, or the defect is due to the product being tampered with, modified or repaired by anyone other than Harmonic Resolution Systems.*
- 3. Warranty does not cover normal recommended care and maintenance.*
- 4. Harmonic Resolution Systems shall not be responsible in any way for consequential or indirect damages or liabilities resulting from the use of the product covered herein or resulting from any breach of this warranty or any implied warranty relating to said product.*

During this period, Harmonic Resolution Systems will repair or replace any defective components free of charge. A Return Authorization Number (RA Number) is required before any product is returned to Harmonic Resolution Systems for any reason. This number must be visible on the exterior of the shipping container(s) for Harmonic Resolution Systems to accept the return.

Units shipped to Harmonic Resolution Systems without a visible RA Number on the exterior of the shipping container(s) are subject to be returned to the sender, freight collect.

Units to be repaired by Harmonic Resolution Systems must be sent shipping and insurance prepaid by the original purchaser in the original packaging material. A returned product should be accompanied by a written description of the defect. Repaired units will be returned by Harmonic Resolution Systems shipping and insurance prepaid.

All other warranties or conditions either written or implied are void.

HARMONIC RESOLUTION SYSTEMS INC.
Great Arrow Industrial Park
255 Great Arrow Ave
Suite 39A
Buffalo, NY 14207
Telephone: 716-873-1437
Fax: 716-873-1434
Web: www.avisolation.com
E-mail: info@avisolation.com